

# 2019 Vero Beach Centennial Finale Parade

## Staging

Staging for the **Halloween Parade** occurs at 19<sup>th</sup> St. just west of 14<sup>th</sup> Ave at the Freshman Learning Center.

Staging for the **Centennial Parade** occurs in the area around 17<sup>th</sup> Ave & 16<sup>th</sup> St, including the VBHS Parking lot.

- The area between the PAC and VBHS Band room must remain CLEAR for the band to assemble.

## Parade Route

(We will use an approximate walking speed of 2.5mph)

Parade starts EAST on 16<sup>th</sup> St from 17<sup>th</sup> Ave.

- 17<sup>th</sup> Ave to 14<sup>th</sup> Ave is ~1240ft, [~6 minute walk]

Parade turns NORTH onto 14<sup>th</sup> Ave

- 16<sup>th</sup> St to 19<sup>th</sup> St. on 14<sup>th</sup> Ave is ~1834 ft. [~8 minute walk]

Halloween Parade Begins at 19<sup>th</sup> St & 14<sup>th</sup> Ave, heading North at 10:00AM

- 19<sup>th</sup> St to 23<sup>rd</sup> St. on 14<sup>th</sup> Ave is ~2153ft. [~10 minute walk]

At 23<sup>rd</sup> & 24<sup>th</sup> St, members of the parade may start disbanding.

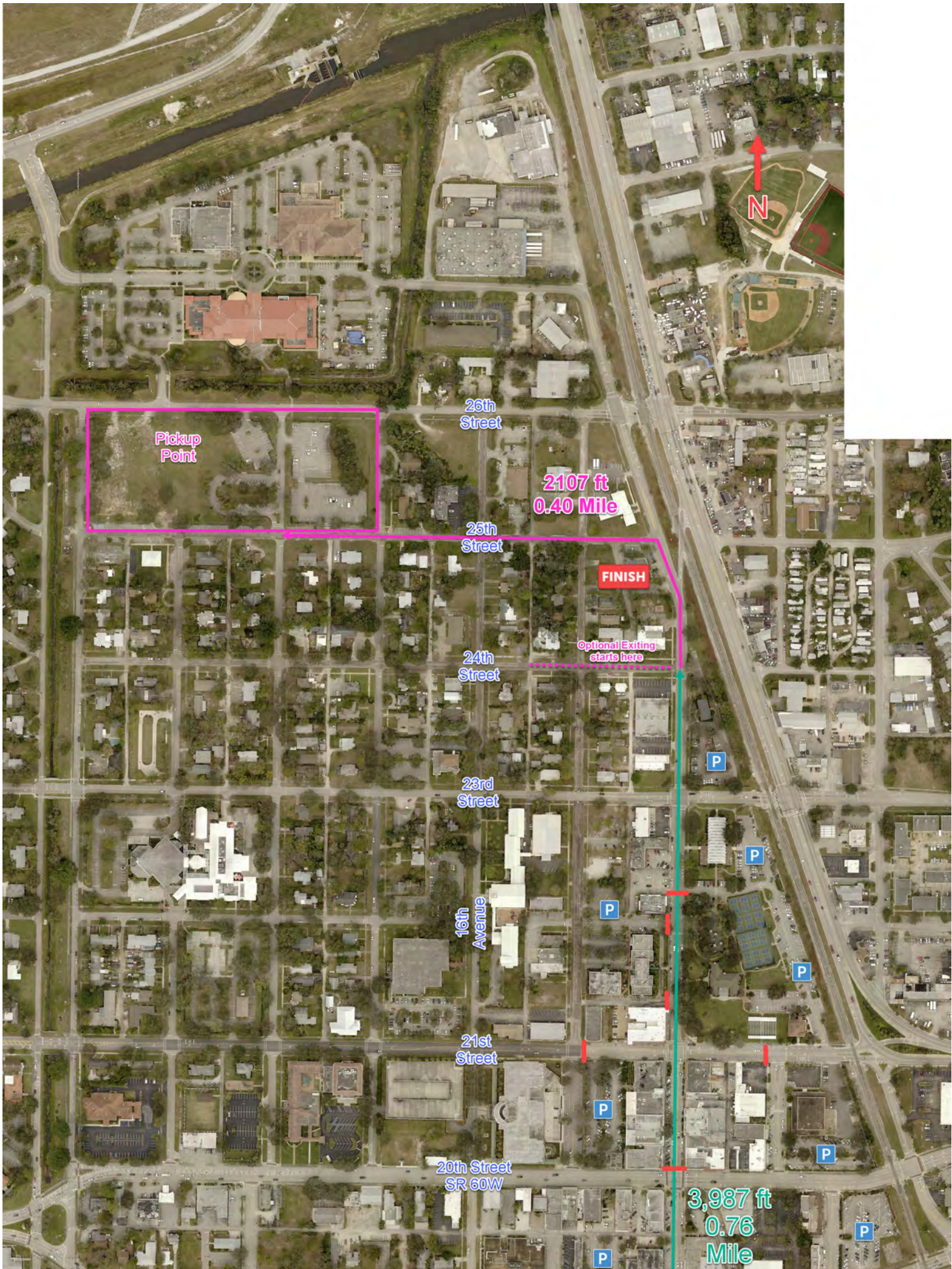
The larger parade groups will proceed north to 25<sup>th</sup> St, then West on 25<sup>th</sup> St to the old County Admin Building.

- From 14<sup>th</sup> Ave, heading north then turning West on 25<sup>th</sup> St. up to 18<sup>th</sup> Ave is ~2107ft. [~10 minute walk]

## Road Closures After Parade

(From North to South – marked RED on map)

- **14th Ave @ Community Center/Pocahontas Park Entrance** - Allows motorists to access Blue Star Restaurant, Exit through Community Center Parking lot to 21st Street.
- **21st Street Eastbound @ 15th Ave; 21st St Westbound @ 13th Ave.** - Eastbound Motorists coming off US 1 can detour to 13th Ave/Old Dixie Hwy. Westbound motorists detour at 15th Ave
- **14th Ave @ SR 60 W** - Traffic from SR60 denied access to 14th Ave Northbound
- **22nd St Eastbound @ 15th Ave** - This one-way street has PARKING spots. Closing it just West of 14th Ave allows drivers to use the 1-lane frontage road of the old courthouse to turn around using alley south of old Courthouse.



Pickup Point

26th Street

2107 ft  
0.40 Mile

25th Street

FINISH

Optional Exiting starts here

24th Street

23rd Street

16th Avenue

21st Street

20th Street  
SR 60W

3,987 ft  
0.76  
Mile

N

P

P

P

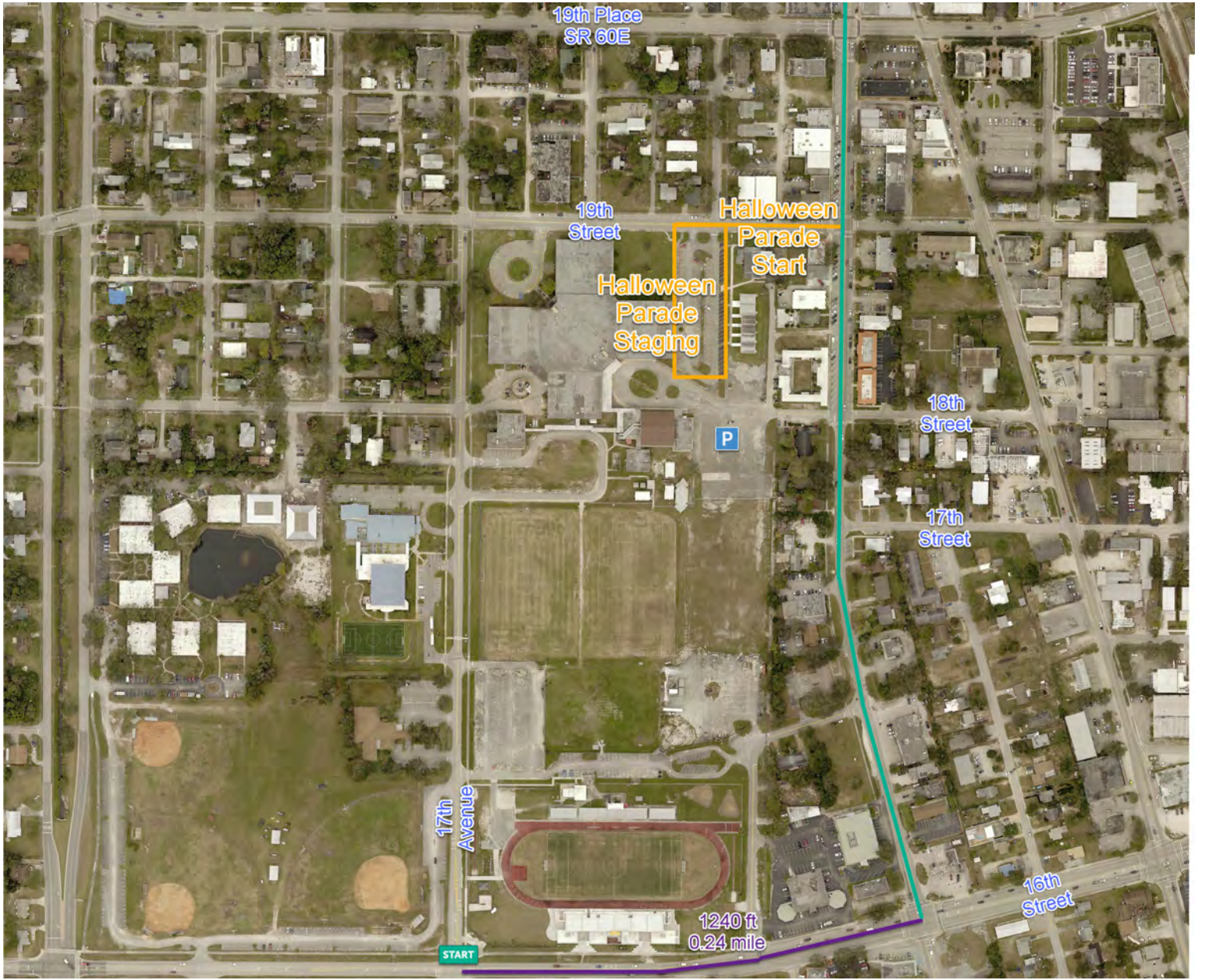
P

P

P

P

P



19th Place  
SR 60E

19th  
Street

Halloween  
Parade  
Start

Halloween  
Parade  
Staging

P

18th  
Street

17th  
Street

17th  
Avenue

16th  
Street

START

1240 ft  
0.24 mile



STAGING

STAGING

STAGING

VBHS BAND  
AREA  
DO NOT BLOCK

~500  
ft

~1240  
ft

14th Ave  
16th St &